



LUXURY RETIREMENT  
ASSISTED LIVING  
AND  
MEMORY CARE  
COMMUNITY



314.843.7788  
[delmargardens.com](http://delmargardens.com)

## SERVICES AND AMENITIES

### INDEPENDENT, ASSISTED AND MEMORY CARE

Carefree retirement living means knowing that all services are included and available to you. At Garden Villas South there are no entrance or endowment fees. Your monthly check includes:

- Spacious Apartments with Fully-Equipped Kitchens with Stainless Steel Appliances and Granite Countertops
- Superb Cuisine in Beautifully-Decorated Dining Rooms
- Dinner Meal Prepared by Our Executive Chef
- Indoor Swimming Pool and Hot Tub
- Styling Salons
- WiFi Available
- Library/Computer Lab
- State-of-the-Art Fitness Center and Wellness Programs
- Ice Cream Parlor
- Billiard/Game Room
- Complimentary Cable TV
- Cocktail Lounges
- Happy Hour
- Putting Green
- Daily Complimentary Courtesies: Parking, Grocery Delivery, etc.
- Reserved Parking
- Laundry Facilities
- On-Site Full Service Bank
- All Utilities (except telephone)
- Weekly Housekeeping and Flat Linen Service
- Daily Scheduled Transportation
- Full Recreational, Social, Educational and Cultural Programs and Outings
- Concierge Available 24 Hours a Day
- Intercom Response System
- State-of-the-Art Fire Protection and Safety Systems
- Spacious Closets and Storage Lockers
- On-Site Home Care, Private Duty, and Pharmacy Services
- Assisted Living, Skilled Nursing, Rehabilitation and Memory Care are available on campus should your healthcare needs change

***Independent Living Monthly Rate Starting at: \$2300***



Retirement, Assisted Living,  
and Memory Care Community

314-843-7788

## ASSISTED LIVING

Make the most of YOUR retirement living! The ASSISTED LIVING program includes the Independent Living services and amenities while providing daily assistance and care designed to meet the individual needs of each resident we have the pleasure of serving.

- Three gourmet meals a day prepared by our Executive Chefs
- Specially trained and qualified Assisted Living Staff available 24 hours
- Assistance with bathing and personal grooming
- Medication management by a licensed nurse
- Assistance with medication administration
- Medications are reviewed at least every 60 days by a Pharmacist
- Registered Dietitian to assist with menu planning and special diets
- Personal laundry and flat linen service
- Additional daily housekeeping and bed making
- Tailored social, recreational, educational and fitness programs
- Personalized Wellness Consultation
- Emergency Response System
- In-house escort service to and from activities, dining, and other areas
- Rehabilitation services available

Skilled Nursing, Rehabilitation and Memory Care are available on campus should your healthcare needs change.

***Monthly Rate Starting at: \$3400***



Retirement, Assisted Living,  
and Memory Care Community

314-843-7788

# ENRICHED MEMORY CARE

Our secured Memory Care program assures that residents with cognitive impairments receive the patient, loving support they deserve in a safe and like-home environment. All services are offered with their personalized needs in mind in addition to:

- Certified staff specially trained and devoted exclusively to caring for residents with Alzheimer's and other cognitive impairments
- Assistance with bathing and personal grooming
- Assistance with incontinence management
- Medication management by a Registered Nurse and administered by Certified Medication Aides; quarterly medication review by a Pharmacist specialized in long-term care
- Three gourmet meals a day served restaurant style and prepared by our Executive Chefs
- Registered Dietitian to assist with menu planning and special diet needs/preferences
- Special care approaches may include: validation and aroma therapy, and hand-under-hand techniques
- Additional tailored recreation therapy provided seven (7) days a week to include group and individual activities
- Family education and support groups
- Additional daily light housekeeping and bed making
- Personal laundry and flat linen service

Skilled Nursing and Rehabilitation are available on campus should your healthcare needs change.

***Monthly Rate Starting at: \$4350***



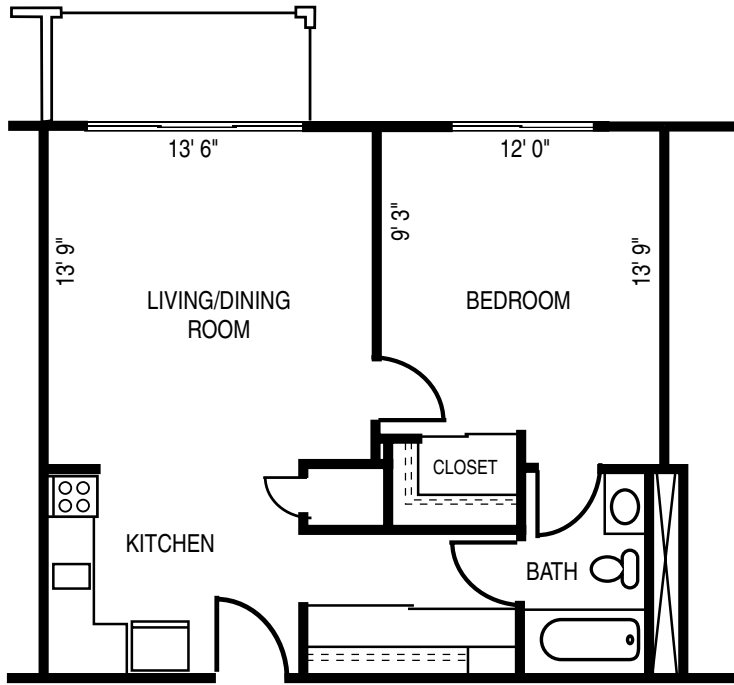
Retirement, Assisted Living,  
and Memory Care Community

314-843-7788

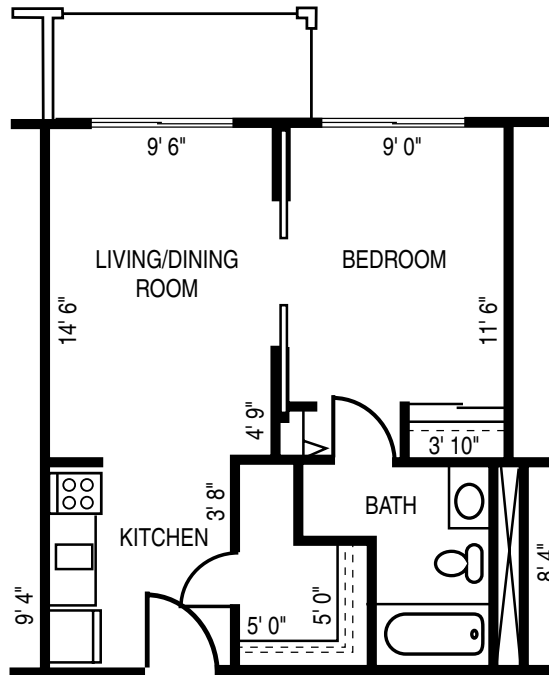
# TYPICAL FLOOR PLANS

- All Square Footage is Approximate -

*One Bedroom  
606 Sq. Ft.*



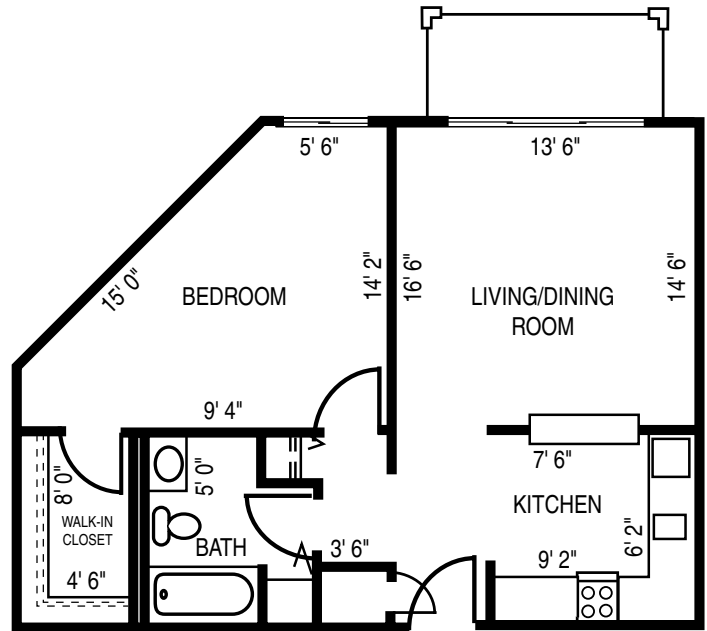
*One Bedroom  
Alcove  
455 Sq. Ft.*



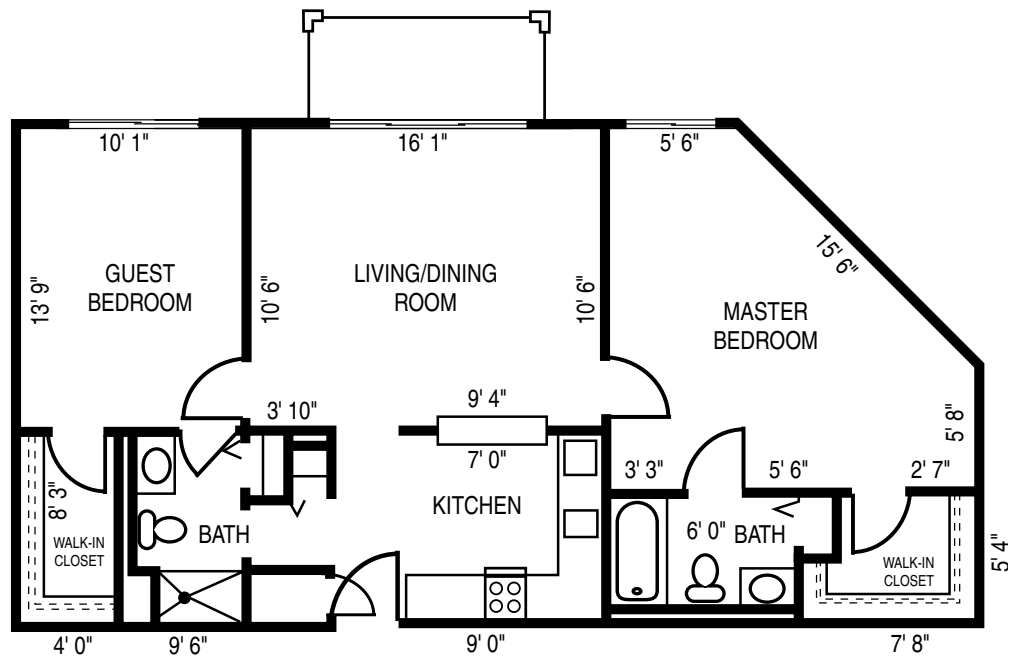
Retirement, Assisted Living,  
and Memory Care Community

314-843-7788

*One Bedroom  
Deluxe Apartment  
663 Sq. Ft.*



*Two Bedroom  
Deluxe Apartment  
966 Sq. Ft.*

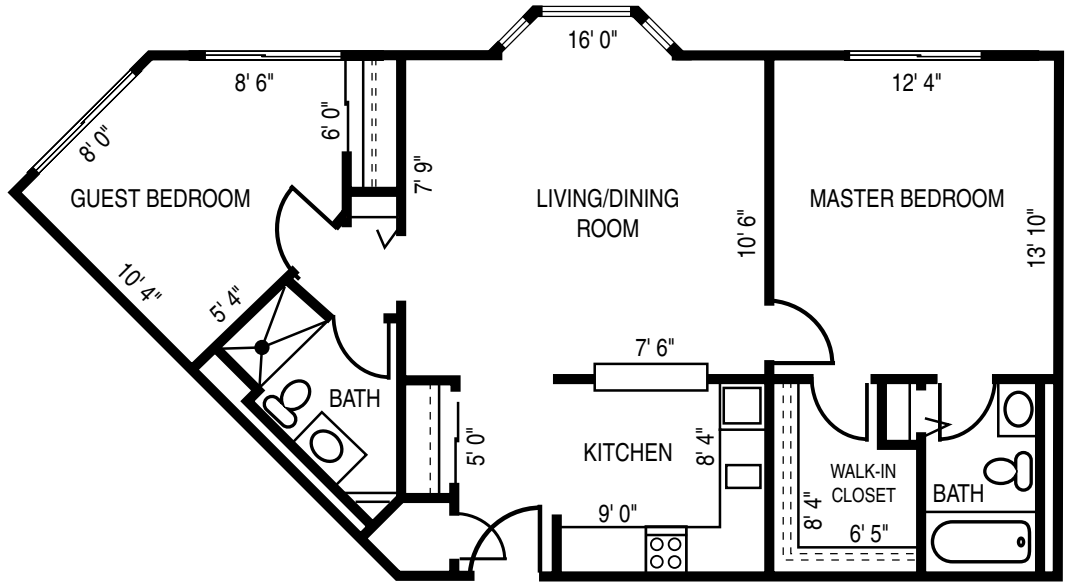


Retirement, Assisted Living,  
and Memory Care Community

314-843-7788

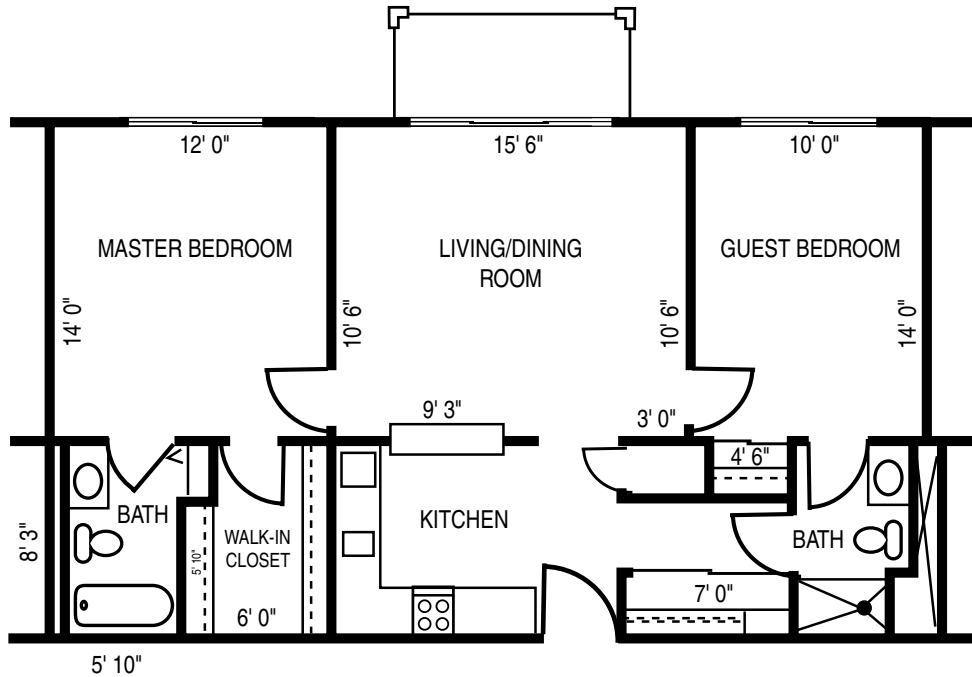
*Two Bedroom  
Garden Apartment*

*910 Sq. Ft.*



*Two Bedroom  
Apartment*

*874 Sq. Ft.*



Retirement, Assisted Living,  
and Memory Care Community

314-843-7788